



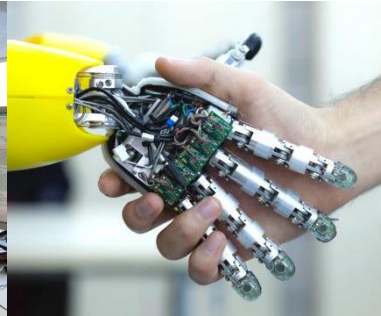
Europäisches
Patentamt

European
Patent Office

Office européen
des brevets

Patent Data Day 2019

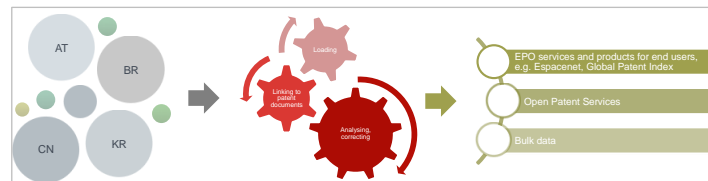
INPADOC legal event data: Coverage information



Outline

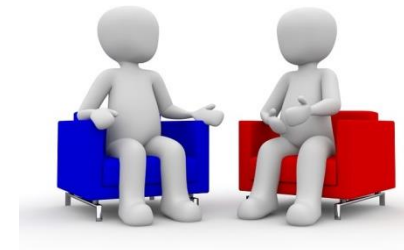
- Distinguishing legal event data and legal status data
- The EPO's worldwide legal status database (INPADOC):
 - coverage
 - recent improvements
 - planned improvements

The INPADOC database



- Covers today data on about 50 million applications from more than 50 patent authorities worldwide
- More than 265 million records
- Annual growth of about 10 per cent
- Only centralised source of comprehensive data on procedural steps during application and granting procedures worldwide and on the post-grant phase

Distinguishing legal event data from legal status data



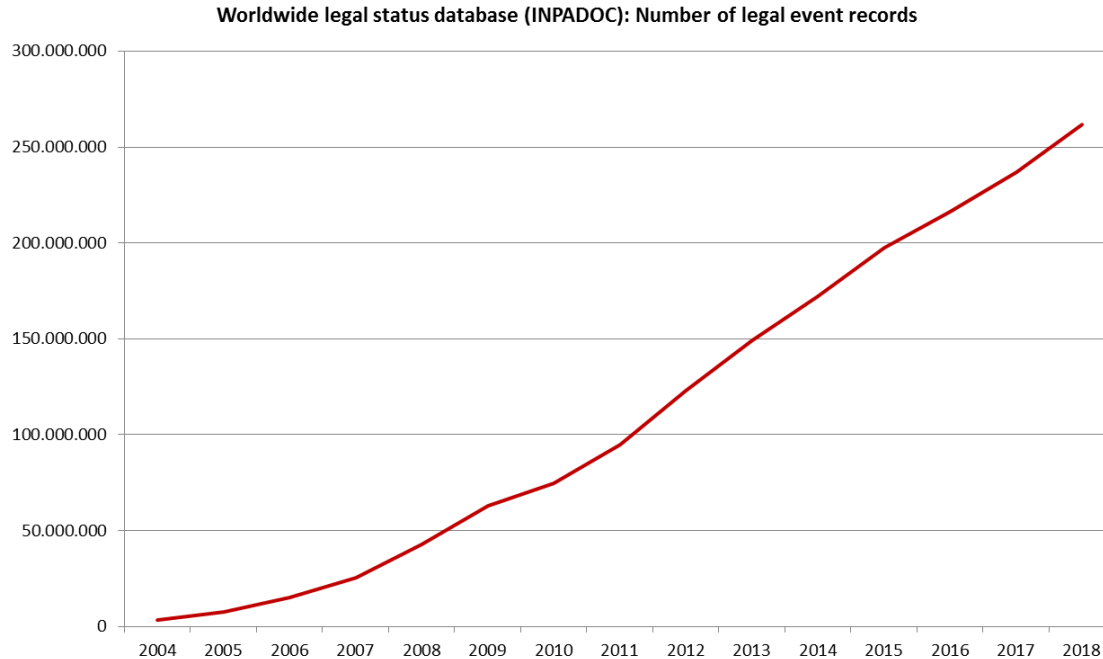
	Description	Data examples	Examples for EPO services and products providing data
Legal event data	Data on any procedural step during the grant procedure and in the post-grant stage	"application filed", "office action sent", "maintenance fee paid"	European Patent Register, INPADOC database, Open Patent Services
Legal status data	Data that includes a statement on the status, or state, of an application or IP right	"application is active", "patent is terminated"	European Patent Register, Federated Patent Register, Open Patent Services

The INPADOC database

- Contains legal event data from the patent gazettes and registers of various patent authorities, including the EPO and more than 50 other patent authorities
- Backbone for many patent information products and services of the EPO and commercial service providers

INPADOC database

- More than 265 million legal event records (March 2019)



INPADOC database: Examples for new and amended data

Patent authority	Description
BE	Delivery of legal event data resumed
LU	Delivery of legal event data resumed
KR	More data available for new post-grant opposition system
WO	<p>Entry of PCT applications into the national phase: Data available for more countries; missing countries added: AZ, CO, CR, CU, DK, ID, IN, KG, KZ, MA, NI, PE, RS, SG, TR, VN, YU.</p> <p>In addition, the EPO improved the coverage for countries for which entry data has generally been available in the INPADOC database. This improvement affects numerous patent authorities, including CN, KR, MX and US.</p>

INPADOC database: Examples for current activities and plans

Patent authority	Description
EP	Complete revision of workflow; revised workflow will be implemented in tranches, presumably starting in Q2 2019
ES	SPC data: the EPO expects to receive SPC back-file data to fill gaps
FR	Complete revision of workflow
HR	Preparing to process HR legal event data
IL	Complete revision of workflow
IT	SPC data: the EPO analyses test data and prepares a workflow to process IT SPC data
JP	Complete revision of workflow in view of the transition to a new data format announced by the JP office for Q2 2019. The new data format will enable the EPO to make JP legal event data available earlier in the INPADOC database.
TW	Test data for TW pre-grant legal events received and analysed. The EPO is working on a workflow to make TW pre-grant data available in the INPADOC database
US	With a new data channel at the USPTO, the EPO was able to resume its plans to make data on the status of US patent applications and US patents available. The EPO is also analysing whether the same channel may be used to make PAIR data available in the INPADOC database
WO	Data on the entry of PCT applications into the national phase: In addition to the steps already taken, the EPO is working on resolving cases of doubt and increasing the coverage and coherence of the data in the INPADOC database further

INPADOC database: Information on the status of US applications and granted patents

Original event code	Event code description
ADPH	Patent Number Assigned
BIS	Entity Status set to Undiscounted
EXP	Patent Expired for Failure to Pay Maintenance Fees
ESPK	Patent Reinstated After Maintenance Fee Payment Confirmed
F160	Maintenance Fee Has Already Been Paid. Refund is scheduled
F161	Maintenance Fee Tendered too Early. Refund is scheduled
F162	Mail Fee Payment Does Not Properly Identify the Patent
F163	M.F. Payment/Certificate of Mailing Unready. 37 CFR 1.8
F164	M.F. Payment/Express Mail Procedure Unready. 37 CFR 1.10
F165	M.F. Payment Seen With Fees for Other Purposes - Will Refund
F166	M.F. Payment not Accepted/Not Invoiced. Negative Returned
F167	Check/Deposit Account Authorization is Unready - Returned
F168	Payment Received - Balance in Deposit Account Insufficient
F169	Payment is in Excess of Amount Required. Refund Scheduled
F170	Payment of Maintenance Fee. 4th Year
F171	Payment of Maintenance Fee. 8th Year
F172	Payment of Maintenance Fee. 12th Year
F173	Payment of Maintenance Fee. 4th Year. Undiscounted Entity
F174	Payment of Maintenance Fee. 8th Year. Undiscounted Entity
F175	Payment of Maintenance Fee. 12th Year. Undiscounted Entity
F176	Surcharge for late payment
F177	Surcharge for late payment. Undiscounted Entity
F273	Payment of Maintenance Fee. 4th Year. Large Entity
F274	Payment of Maintenance Fee. 8th Year. Large Entity
F275	Payment of Maintenance Fee. 12th Year. Large Entity
F277	Surcharge for late payment. Large Entity
LSM1	Small Entity Status
LSM2	Small Entity Status as Individual Inventor
LSM3	Small Entity Status as Small Business
LSM4	Small Entity Status as Nonprofit
LSM5	Small Entity Status as Inventor
LSM6	Small Entity Status as Inventor
LSM7	Small Entity Status as Inventor
LSM8	Small Entity Status as Inventor
LSM9	Small Entity Status as Inventor
LSM10	Small Entity Status as Inventor
LSM11	Small Entity Status as Inventor
LSM12	Small Entity Status as Inventor
LSM13	Small Entity Status as Inventor
LSM14	Small Entity Status as Inventor
LSM15	Small Entity Status as Inventor
LSM16	Small Entity Status as Inventor
LSM17	Small Entity Status as Inventor
LSM18	Small Entity Status as Inventor
LSM19	Small Entity Status as Inventor
LSM20	Small Entity Status as Inventor
LSM21	Small Entity Status as Inventor
LSM22	Small Entity Status as Inventor
LSM23	Small Entity Status as Inventor
LSM24	Small Entity Status as Inventor
LSM25	Small Entity Status as Inventor
LSM26	Small Entity Status as Inventor
LSM27	Small Entity Status as Inventor
LSM28	Small Entity Status as Inventor
LSM29	Small Entity Status as Inventor
LSM30	Small Entity Status as Inventor
LSM31	Small Entity Status as Inventor
LSM32	Small Entity Status as Inventor
LSM33	Small Entity Status as Inventor
LSM34	Small Entity Status as Inventor
LSM35	Small Entity Status as Inventor
LSM36	Small Entity Status as Inventor
LSM37	Small Entity Status as Inventor
LSM38	Small Entity Status as Inventor
LSM39	Small Entity Status as Inventor
LSM40	Small Entity Status as Inventor
LSM41	Small Entity Status as Inventor
LSM42	Small Entity Status as Inventor
LSM43	Small Entity Status as Inventor
LSM44	Small Entity Status as Inventor
LSM45	Small Entity Status as Inventor
LSM46	Small Entity Status as Inventor
LSM47	Small Entity Status as Inventor
LSM48	Small Entity Status as Inventor
LSM49	Small Entity Status as Inventor
LSM50	Small Entity Status as Inventor
LSM51	Small Entity Status as Inventor
LSM52	Small Entity Status as Inventor
LSM53	Small Entity Status as Inventor
LSM54	Small Entity Status as Inventor
LSM55	Small Entity Status as Inventor
LSM56	Small Entity Status as Inventor
LSM57	Small Entity Status as Inventor
LSM58	Small Entity Status as Inventor
LSM59	Small Entity Status as Inventor
LSM60	Small Entity Status as Inventor
LSM61	Small Entity Status as Inventor
LSM62	Small Entity Status as Inventor
LSM63	Small Entity Status as Inventor
LSM64	Small Entity Status as Inventor
LSM65	Small Entity Status as Inventor
LSM66	Small Entity Status as Inventor
LSM67	Small Entity Status as Inventor
LSM68	Small Entity Status as Inventor
LSM69	Small Entity Status as Inventor
LSM70	Small Entity Status as Inventor
LSM71	Small Entity Status as Inventor
LSM72	Small Entity Status as Inventor
LSM73	Small Entity Status as Inventor
LSM74	Small Entity Status as Inventor
LSM75	Small Entity Status as Inventor
LSM76	Small Entity Status as Inventor
LSM77	Small Entity Status as Inventor
LSM78	Small Entity Status as Inventor
LSM79	Small Entity Status as Inventor
LSM80	Small Entity Status as Inventor
LSM81	Small Entity Status as Inventor
LSM82	Small Entity Status as Inventor
LSM83	Small Entity Status as Inventor
LSM84	Small Entity Status as Inventor
LSM85	Small Entity Status as Inventor
LSM86	Small Entity Status as Inventor
LSM87	Small Entity Status as Inventor
LSM88	Small Entity Status as Inventor
LSM89	Small Entity Status as Inventor
LSM90	Small Entity Status as Inventor
LSM91	Small Entity Status as Inventor
LSM92	Small Entity Status as Inventor
LSM93	Small Entity Status as Inventor
LSM94	Small Entity Status as Inventor
LSM95	Small Entity Status as Inventor
LSM96	Small Entity Status as Inventor
LSM97	Small Entity Status as Inventor
LSM98	Small Entity Status as Inventor
LSM99	Small Entity Status as Inventor
LSM100	Small Entity Status as Inventor

About 80 statuses available for utility patents



INPADOC event code	Description EN
STCA	INFORMATION ON STATUS: APPLICATION FILING
STCB	INFORMATION ON STATUS: APPLICATION DISCONTINUATION
STCC	INFORMATION ON STATUS: APPLICATION REVIVAL
STCE	INFORMATION ON STATUS: PRE-GRANT REVIEW
STCF	INFORMATION ON STATUS: PATENT GRANT
STCH	INFORMATION ON STATUS: PATENT DISCONTINUATION
STCK	INFORMATION ON STATUS: PATENT REVIVAL
STCT	INFORMATION ON STATUS: ADMINISTRATIVE PROCEDURE ADJUSTMENT
STCV	INFORMATION ON STATUS: APPEAL PROCEDURE
STPP	INFORMATION ON STATUS: PATENT APPLICATION AND GRANTING PROCEDURE IN GENERAL

INPADOC database: Weekly statistics (now)

- At present 2 files:
 - 'Contents and coverage of the INPADOC legal status file': statistics on the number of events and general information on date ranges covered
 - 'Legal event codes': description of and category information on INPADOC legal event codes

INPADOC database: Weekly statistics (present and future)

Present : Future

Authority	Event Code	Regional	First Date Gazette	Last Date Gazette	First Application	First Date Filed	Last Application	Last Date Filed	No. Events	
AR	FA		23-02-2004	24-06-2017	AR 1467095	A	05-11-1995	A	11-09-2015	34189
AR	FR		09-05-2004	31-05-2012	AR 1467195	A	05-11-1995	AR 1467200	32287	
AR	FC		09-01-2004	31-05-2017	AR 14613295	A	08-11-1995	AR 146032342	2409	
AR	FD		13-04-2005	23-04-2017	AR 1460031188	U	26-11-1996	AR 1460032048	27	
AR	AG		07-01-2004	31-05-2017	AR 146003095	A	02-11-1995	AR 1461503291	24181	
AT	ASW		15-07-1968	15-03-2003	AT 47200	A	16-01-1900	AT 46697	100	
AT	ASB		15-09-1968	15-07-1996	AT 57363	A	19-07-1963	AT 53395	53	
AT	AJJ		15-01-1968	15-12-2006	AT 120767	A	22-01-1964	AT 59932004	26-11-2004	1351
AT	ADJ		15-09-1970	15-09-2010	AT 781666	A	28-02-1966	AT 530899	21-09-1999	338
AT	ADW		15-01-1969	15-11-2006	AT 120767	A	22-01-1964	AT 52842004	28-07-2004	166
AT	ASIV		15-08-1978	15-06-1985	AT 762372	A	05-09-1972	AT 761184	01-06-1984	23
AT	AZE		15-09-1968	15-09-2008	AT 54866	A	26-03-1965	AT 53062003	11-02-2003	1714
AT	AJ		15-07-1968	15-03-1998	AT 571170	A	21-05-1979	AT 554933	15-12-1993	3
AT	AZ		15-02-2010	15-12-2018	AT 109396	A	20-09-1998	AT 50004597	26-01-2017	108
AT	EB		15-04-1970	15-03-1989	AT 50366	A	18-01-1968	AT 50880	25-07-1980	5
AT	IBA	EP	15-08-2002	15-04-2004	EP 5430050	A	30-01-1984	EP 51400128	17-01-2001	10
AT	IEES		15-02-2005	15-01-2005	AT 57067	A	29-09-1967	AT 57068	06-02-1968	2
AT	EEB		15-01-1985	15-01-1989	AT 5034248	T	26-11-1980	AT 56110414	05-08-1986	4
AT	EECC		15-02-2009	15-04-2009	AT 17695	A	06-06-1991	AT 50740313	25-06-2004	2
AT	EECC	EP	15-02-2014	15-11-2018	EP 1513226	A	19-08-1969	EP 17016431	13-11-2017	31
AT	EECA		15-08-1982	15-03-2012	AT 59930	A	22-01-1970	AT 5945040	20-02-2009	5210
AT	EEFA	EP	15-10-1992	15-12-2011	EP 5420040	A	02-03-1981	EP 57755095	06-04-2007	72
AT	EEGN		15-07-1999	15-01-2008	AT 5490844	A	17-08-1993	AT 50738138	10-09-2003	3
AT	EEH		15-09-1982	15-03-2012	AT 109530	A	02-09-1968	AT 56873405	15-12-2008	17251
AT	EEHI	EP	15-04-1968	15-02-2012	EP 7000367	A	21-12-1979	EP 57015114	28-09-2007	357
AT	EEK		15-02-1991	15-05-2010	AT 57774	A	05-02-1974	AT 5765873	01-08-2002	44
AT	EEK		15-08-2000	15-07-2009	AT 0206050	T	20-02-2002	AT 0206706	30-05-2006	3
AT	EEVA		15-11-1999	15-04-2012	AT 71520	A	23-05-1914	AT 72299	16-02-1999	3954

File: 'Contents and coverage of the INPADOC legal status file'

Authority	Event Code	Regional	First Date Gazette	Last Date Gazette	First Application	First Date Filed	Last Application	Last Date Filed	No. Events	
AR	FA		23-02-2004	24-06-2017	AR 1467095	A	05-11-1995	A	11-09-2015	34189
AR	FR		09-05-2004	31-05-2012	AR 1467195	A	05-11-1995	AR 1467200	32287	
AR	FC		09-01-2004	31-05-2017	AR 14613295	A	08-11-1995	AR 146032342	2409	
AR	FD		13-04-2005	23-04-2017	AR 1460031188	U	26-11-1996	AR 1460032048	27	
AR	AG		07-01-2004	31-05-2017	AR 146003095	A	02-11-1995	AR 1461503291	24181	
AT	ASW		15-07-1968	15-03-2003	AT 47200	A	16-01-1900	AT 46697	100	
AT	ASB		15-09-1968	15-07-1996	AT 57363	A	19-07-1963	AT 53395	53	
AT	AJJ		15-01-1968	15-12-2006	AT 120767	A	22-01-1964	AT 59932004	26-11-2004	1351
AT	ADJ		15-09-1970	15-09-2010	AT 781666	A	28-02-1966	AT 530899	21-09-1999	338
AT	ADW		15-01-1969	15-11-2006	AT 120767	A	22-01-1964	AT 52842004	28-07-2004	166
AT	ASIV		15-08-1978	15-06-1985	AT 762372	A	05-09-1972	AT 761184	01-06-1984	23
AT	AZE		15-09-1968	15-09-2008	AT 54866	A	26-03-1965	AT 53062003	11-02-2003	1714
AT	AJ		15-07-1968	15-03-1998	AT 571170	A	21-05-1979	AT 554933	15-12-1993	3
AT	AZ		15-02-2010	15-12-2018	AT 109396	A	20-09-1998	AT 50004597	26-01-2017	108
AT	EB		15-04-1970	15-03-1989	AT 50366	A	18-01-1968	AT 50880	25-07-1980	5
AT	IBA	EP	15-08-2002	15-04-2004	EP 5430050	A	30-01-1984	EP 51400128	17-01-2001	10
AT	IEES		15-02-2005	15-01-2005	AT 57067	A	29-09-1967	AT 57068	06-02-1968	2
AT	EEB		15-01-1985	15-01-1989	AT 5034248	T	26-11-1980	AT 56110414	05-08-1986	4
AT	EECC		15-02-2009	15-04-2009	AT 17695	A	06-06-1991	AT 50740313	25-06-2004	2
AT	EECC	EP	15-02-2014	15-11-2018	EP 1513226	A	19-08-1969	EP 17016431	13-11-2017	31
AT	EECA		15-08-1982	15-03-2012	AT 59930	A	22-01-1970	AT 5945040	20-02-2009	5210
AT	EEFA	EP	15-10-1992	15-12-2011	EP 5420040	A	02-03-1981	EP 57755095	06-04-2007	72
AT	EEGN		15-07-1999	15-01-2008	AT 5490844	A	17-08-1993	AT 50738138	10-09-2003	3
AT	EEH		15-09-1982	15-03-2012	AT 109530	A	02-09-1968	AT 56873405	15-12-2008	17251
AT	EEHI	EP	15-04-1968	15-02-2012	EP 7000367	A	21-12-1979	EP 57015114	28-09-2007	357
AT	EEK		15-02-1991	15-05-2010	AT 57774	A	05-02-1974	AT 5765873	01-08-2002	44
AT	EEK		15-08-2000	15-07-2009	AT 0206050	T	20-02-2002	AT 0206706	30-05-2006	3
AT	EEVA		15-11-1999	15-04-2012	AT 71520	A	23-05-1914	AT 72299	16-02-1999	3954

File: 'Legal event codes'

Authority	Event Code	Regional	First Date Gazette	Last Date Gazette	First Application	First Date Filed	Last Application	Last Date Filed	No. Events	Event Description	Event Code	Event Description	Event Code	Event Description	Event Code	Event Description	Event Code	Event Description	Event Code	Event Description												
AR	FA		23-02-2004	24-06-2017	AR 1467095	A	05-11-1995	A	11-09-2015	34189	AR	FA		23-02-2004	24-06-2017	AR 1467095	A	05-11-1995	A	11-09-2015	34189											
AR	FR		09-05-2004	31-05-2012	AR 1467195	A	05-11-1995	AR 1467200	32287	AR	FR		09-05-2004	31-05-2012	AR 1467195	A	05-11-1995	AR 1467200	32287	AR	FR		09-05-2004	31-05-2012	AR 1467195	A	05-11-1995	AR 1467200	32287			
AR	FC		09-01-2004	31-05-2017	AR 14613295	A	08-11-1995	AR 146032342	2409	AR	FC		09-01-2004	31-05-2017	AR 14613295	A	08-11-1995	AR 146032342	2409	AR	FC		09-01-2004	31-05-2017	AR 14613295	A	08-11-1995	AR 146032342	2409			
AR	FD		13-04-2005	23-04-2017	AR 1460031188	U	26-11-1996	AR 1460032048	27	AR	FD		13-04-2005	23-04-2017	AR 1460031188	U	26-11-1996	AR 1460032048	27	AR	FD		13-04-2005	23-04-2017	AR 1460031188	U	26-11-1996	AR 1460032048	27			
AR	AG		07-01-2004	31-05-2017	AR 146003095	A	02-11-1995	AR 1461503291	24181	AR	AG		07-01-2004	31-05-2017	AR 146003095	A	02-11-1995	AR 1461503291	24181	AR	AG		07-01-2004	31-05-2017	AR 146003095	A	02-11-1995	AR 1461503291	24181			
AT	ASW		15-07-1968	15-03-2003	AT 47200	A	16-01-1900	AT 46697	100	AT	ASW		15-07-1968	15-03-2003	AT 47200	A	16-01-1900	AT 46697	100	AT	ASW		15-07-1968	15-03-2003	AT 47200	A	16-01-1900	AT 46697	100			
AT	ASB		15-09-1968	15-07-1996	AT 57363	A	19-07-1963	AT 53395	53	AT	ASB		15-09-1968	15-07-1996	AT 57363	A	19-07-1963	AT 53395	53	AT	ASB		15-09-1968	15-07-1996	AT 57363	A	19-07-1963	AT 53395	53			
AT	AJJ		15-01-1968	15-12-2006	AT 120767	A	22-01-1964	AT 59932004	26-11-2004	1351	AT	AJJ		15-01-1968	15-12-2006	AT 120767	A	22-01-1964	AT 59932004	26-11-2004	1351	AT	AJJ		15-01-1968	15-12-2006	AT 120767	A	22-01-1964	AT 59932004	26-11-2004	1351
AT	ADJ		15-09-1970	15-09-2010	AT 781666	A	28-02-1966	AT 530899	21-09-1999	338	AT	ADJ		15-09-1970	15-09-2010	AT 781666	A	28-02-1966	AT 530899	21-09-1999	338	AT	ADJ		15-09-1970	15-09-2010	AT 781666	A	28-02-1966	AT 530899	21-09-1999	338
AT	ADW		15-01-1969	15-11-2006	AT 120767	A	22-01-1964	AT 52842004	28-07-2004	166	AT	ADW		15-01-1969	15-11-2006	AT 120767	A	22-01-1964	AT 52842004	28-07-2004	166	AT	ADW		15-01-1969	15-11-2006	AT 120767	A	22-01-1964	AT 52842004	28-07-2004	166
AT	ASIV		15-08-1978	15-06-1985	AT 762372	A	05-09-1972	AT 761184	01-06-1984	23	AT	ASIV		15-08-1978	15-06-1985	AT 762372	A	05-09-1972	AT 761184	01-06-1984	23	AT	ASIV		15-08-1978	15-06-1985	AT 762372	A	05-09-1972	AT 761184	01-06-1984	23
AT	AZE		15-09-1968	15-09-2008	AT 54866	A	26-03-1965	AT 53062003	11-02-2003	1714	AT	AZE		15-09-1968	15-09-2008	AT 54866	A	26-03-1965	AT 53062003	11-02-2003	1714	AT	AZE		15-09-1968	15-09-2008	AT 54866	A	26-03-1965	AT 53062003	11-02-2003	1714
AT	AJ		15-07-1968	15-03-																												

Thank you for your attention!

Christian Soltmann

Patent Data Services

European Patent Office

Directorate 5.4.1 | Publication

Rennweg 12

A-1030 Vienna

csoltmann@epo.org