

INPI – Patcom meeting

Courbevoie – 5th June 2015

DSI / Information Dissemination Service



1- News from the INPI : launch of new e-services in 2014-Q4/2015

- ▶ **e-inscription** : for entries in the French patent register / patents, trademarks and designs
- ▶ **e-opposition** : for trademark opposition
- ▶ **e-design** : for design application
- ▶ **e-payment** for patent renewal fees
- ▶ **New ! e-geographical indication** : for geographic indication filing → New online GI database will be available in September 2015

1- News from the INPI : launch of new e-services in 2014-Q4/2015

The screenshot shows the INPI website interface. At the top is the INPI logo. Below it is a navigation bar with the following items: L'INPI, SERVICES ET PRESTATIONS, INNOVATION > LA GALERIE, Marques, Brevets, Dessins et modèles, Enveloppes Soleau, and Indications géographiques. The main content area features a large orange banner with the text "ON A MIXÉ LES 2 ANCIENNES BASES BREVETS..." and "DU COUP, C'EST MÉCHAMMENT PLUS EFFICACE !". To the right of the banner is a cartoon character holding a red tool labeled "Saisie des brevets" and "Esp. géomat". Below the banner are three promotional boxes: "Découvrez la nouvelle base brevet" with an "accéder" link, "Palmarès des déposants de brevets 2014" with a "découvrir" link, and "Découvrez nos autres trésors" with a "découvrir" link. At the bottom, there are several sections: "ACTUALITÉS - AGENDA" with a list of news items and links to "Les actualités" and "L'agenda"; "DÉMARCHES EN LIGNE" with a dropdown menu listing services such as " Paiement en ligne des annuités", "Dépôt électronique de marque", "Renouvellement électronique de marque", "Opposition en ligne à une marque", "Dépôt électronique de dessins et modèles", "Dépôt de brevet en ligne (abonnés)", "Inscription en ligne aux registres PI", "Dépôt d'Indication Géographique", and "Formulaires interactifs"; "LA PROPRIÉTÉ INTELLECTUELLE" with a list of questions and links; and "VOUS ÊTES" and "OÙ NOUS TROUVER" sections with dropdown menus. At the bottom right is a "VOUS RECHERCHEZ" section with a search bar and a "Recherche avancée" link. The footer contains the text "INSTITUT NATIONAL".

2- News from the INPI : launch of the new INPI Patent database

- ▶ <http://bases-brevets.inpi.fr>
- ▶ Beta-test : 17 December 2014
- ▶ Closing of the FR Espacenet and Patent status databases : 23 January 2015
- ▶ The Patent database contains:
 - the French patent applications (FR) published from 1902 onwards
 - the European (EP) and international (WO) applications since 1978
 - the supplementary protection certificate applications (SPC) published since 1993

some approximately 7.7 millions applications

Information regarding the **status in France** is available for applications filed since 1989

2- Launch of the new INPI Patent database

The screenshot shows the INPI Patent Database website. At the top left is the INPI logo. A navigation bar contains links for 'L'INPI', 'SERVICES ET PRESTATIONS', 'INNOVATION > LA GALERIE', 'Marques', 'Brevets', 'Dessins et modèles', 'Enveloppes Soleau', and 'Indications géographiques'. Below this is an orange banner with a magnifying glass icon and the text 'PATENT DATABASE > Home'. A secondary navigation bar includes 'PATENT DATABASE | Basic Search | Advanced Search | Help | Contact', 'History : Notice (0) | Search (0)', and language options 'FR | EN'. A search box contains the text 'Essilor lentille? ophtalmique? 2013' and a 'SEARCH' button. Below the search box are checkboxes for 'FR', 'EP', 'WO', and 'SPC', along with a 'More' link and an 'Advanced search' link. The main content area is divided into two columns. The left column has a 'News' section with two articles: 'WELCOME TO THE NEW INPI PATENT DATABASE' (dated 2015-01-23) and 'NEW FEATURES OF THE INPI PATENT DATABASE' (dated 2015-01-23). The right column has a 'Last update' section dated 2015-04-03, listing updates for 'FR', 'EP', 'WO', and 'CCP' with their respective last published numbers.

News

WELCOME TO THE NEW INPI PATENT DATABASE
2015-01-23
The INPI Patent database is the new online search service offered by the INPI designed to replace...

NEW FEATURES OF THE INPI PATENT DATABASE
2015-01-23
For the users of the FR Espacenet and Patent status databases: you will find below the list of new...

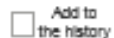
Last update on 2015-04-03

FR : 2015-04-03 ; last published No. : **FR3011435**
EP : 2015-04-01 ; last published No. : **EP2854493**
WO : 2015-03-26 ; last published No. : **WO2015042620**
CCP : 2015-04-03 ; last published No. : **FR15C0019**

2- Launch of the new INPI Patent database

New features :

- ▶ search for French patent applications from 1902 onwards
- ▶ search for SPC applications from 1993 onwards
- ▶ search for representatives and applicant departments for French patent applications
- ▶ search for entries in the French patent register
- ▶ French translations of the European granted patents available since 1995

**SUPPORT DE CASQUE DE CHANTIER AVEC BLOCAGE DE SECURITE**

DESCRIPTION

DOCUMENTS

Publication No. and date	FR3004074 - 2014-10-10 (BOPI 2014-41)
Application No. and date of filing	FR1300773 - 2013-04-04
IPC classification	A42B 3/00 ; B60R 7/00 ; B60R 7/10 ; B60R 21/02
Patent family	FR3004074A1

**Abstract**

L'invention est un concept innovant permettant de sécuriser intuitivement le casque, dans un geste naturel et précis, à l'intérieur de tous types de véhicules de chantier. Ce support présente une forme évasée à sa base, lui permettant de recevoir tous types et toutes tailles de casques de chantier. La coque est constituée de nervures de renfort de forme elliptique et cannelures d'aération entre les nervures. Des retraits du profil de la base maintiennent une sangle élastique à l'axe du casque. Un adhésif positionné sur la base avant et arrière, permet de positionner le support de casque dans la zone la plus fonctionnelle, à l'intérieur de la cabine ou du véhicule, et cela sans outillage.

PARTIES

Applicant(s) :

MODELAGE MAGNIN SAS - 445B RTE DE LA GALANDIERE - 38730 PANISSAGE - FR - Number Siren : 387738065

Proprietor(s) :

MODELAGE MAGNIN SAS - 445B RTE DE LA GALANDIERE - 38730 PANISSAGE - FR - Number Siren : 387738065

Inventor(s) :

MAGNIN LIONEL CLAUDE - 15 CHE DES EAUX CLAIRES - 38730 BLANDIN - FR

Representative :

MODELAGE MAGNIN SAS - 445B RTE DE LA GALANDIERE - 38730 PANISSAGE - FR

[Link to Espacenet Worldwide](#)

STATUS IN FRANCE

Date of preliminary search report	2014-10-10	(BOPI 2014-41)
Date of grant	2015-04-03	(BOPI 2015-14)
Last renewal fee	2014-04-08	18.00 €

File inspection

Abrégé (texte) / Abstract (text)
2013-04-04

Description / Description
2013-04-04

Revendications / Claims
2013-04-04

Dessin(s) / Drawing(s)
2013-04-04

Requête / Request for granting
2013-04-04

Notification / Notification
2013-07-15

Courrier du déposant / Letter send by applicant
2013-09-03

Revendications / Claims
2013-09-03

Abrégé (dessin) / Abstract (drawing)
2013-09-03

Notification / Notification
2014-01-27

Opinion écrite / Written opinion
2014-01-29

Rapport de recherche préliminaire / Preliminary SR
2014-01-29

Page de garde de dem. publiée / FR-A
1st page
2014-09-26

i Ce fichier revendique la conformité à la norme PDF/A et a été ouvert en lecture seule pour empêcher toute modification.

Activer les fonctions de modification

19 RÉPUBLIQUE FRANÇAISE
INSTITUT NATIONAL
DE LA PROPRIÉTÉ INDUSTRIELLE
PARIS

11 N° de publication : **3 004 074**
(à n'utiliser que pour les commandes de reproduction)

21 N° d'enregistrement national : **13 00773**

51 Int Cl⁶ : A 42 B 3:00 (2013.01), B 60 R 7:00, 7:10, 21/02

12 **DEMANDE DE BREVET D'INVENTION** **A1**

22 Date de dépôt : 04.04.13.

30 Priorité :

71 Demandeur(s) : *MODELAGE MAGNIN SAS — FR.*

72 Inventeur(s) : *MAGNIN LIONEL CLAUDE.*

43 Date de mise à la disposition du public de la demande : 10.10.14 Bulletin 14/41.

56 Liste des documents cités dans le rapport de recherche préliminaire : *Se reporter à la fin du présent fascicule*

60 Références à d'autres documents nationaux apparentés :

73 Titulaire(s) : *MODELAGE MAGNIN SAS.*

Demande(s) d'extension :

74 Mandataire(s) : *MODELAGE MAGNIN SAS.*

54 **SUPPORT DE CASQUE DE CHANTIER AVEC BLOCAGE DE SECURITE.**

57 L'invention est un concept innovant permettant de sécuriser intuitivement le casque, dans un geste naturel et précis, à l'intérieur de tous types de véhicules de chantier.

Ce support présente une forme évasée à sa base, lui permettant de recevoir tous types et toutes tailles de casques de chantier. La coque est constituée de nervures de renfort de forme elliptique et cannelures d'aération entre les nervures. Des retraits du profil de la base maintiennent une sangle élastique à l'axe du casque. Un adhésif positionné sur la base avant et arrière, permet de positionner le support de casque dans la zone la plus fonctionnelle, à l'intérieur de la cabine ou du véhicule, et cela sans outillage.



3- INPI PI licenses

▶ Patents

- FR bibliographic and status data / EP national phasis (XML ST36) : since 2010
- FR-A full-text : XML ST36 – Since 1981 – Weekly updates – 450 000 doc
- FR-A & B Documents : PDF (A) and ST33 / XML (A + B) : 2010
- FR 19th century documents : 1791 – 1855

▶ Trademarks

- FR : since 1966 - logos 1982

▶ Design and models

- FR : since 1910
- International : images from 1985 – 1997

4- INPI : Open data

Open data : French government impulse / Etalab

- ▶ October 2014 – January 2015

 - Launch of 11 new open licenses (in addition to 19th Century Patent)

 - 6 Patents – 1 Trademarks – 2 Designs and Models – 2 Caselaw

 - > 4 Million IP rights available - open format – XML + PDF

 - Free of charge – Description on inpi.fr

 - Links from data.gouv.fr

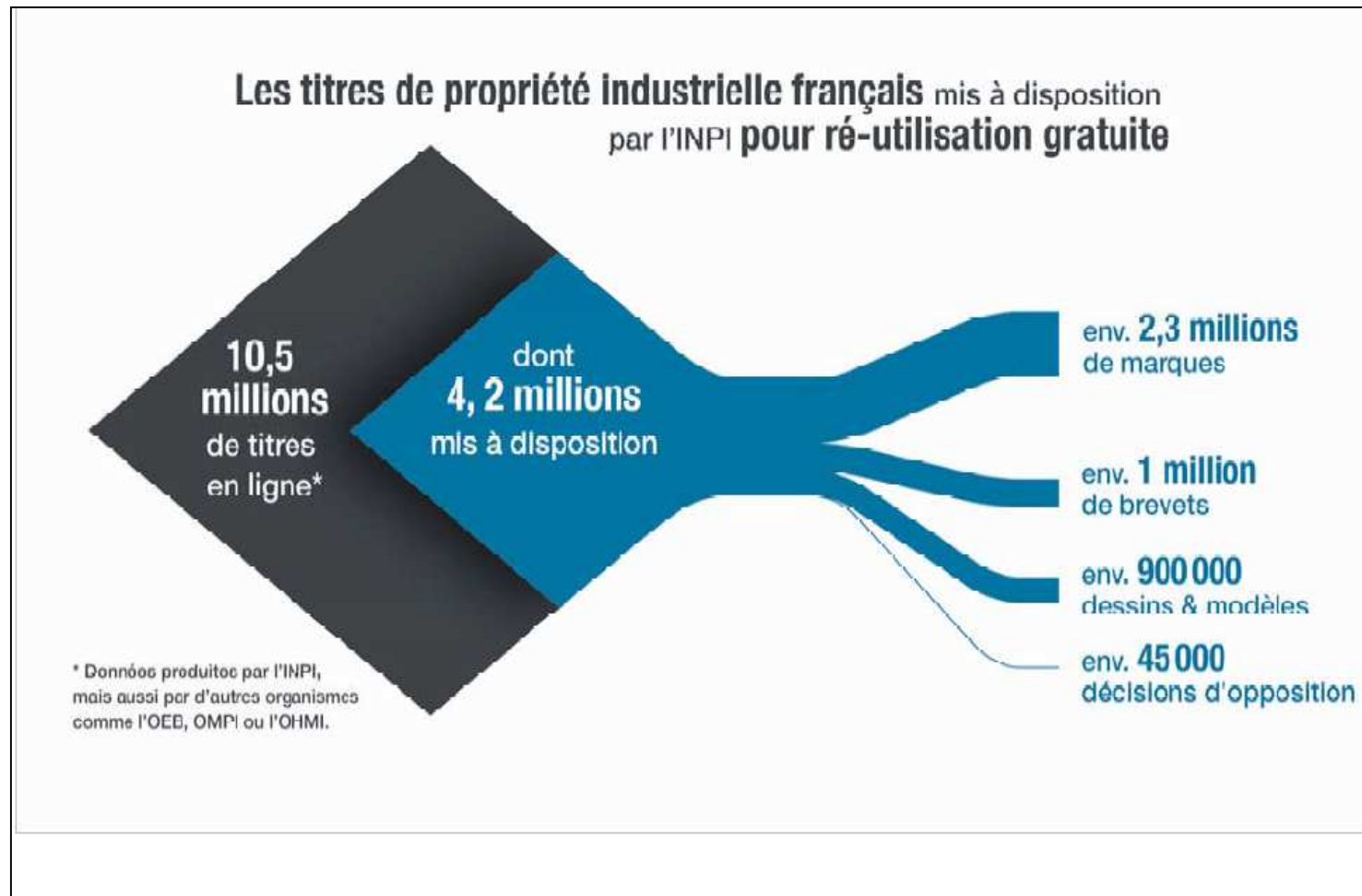
- ▶ Technical and legal environment

 - Free access – Support for innovation

 - New licenses – Distribution rights – Personal data specificities

 - Data available through ftp and hard disk

4- INPI : Open data



4- INPI : Open data

A very good support for innovation

▶ Users (9 months)

- ✓ 102 licenses submitted / 90 new + 12 migrated (x9)
- ✓ 64 licenses owners / 55 new + 9 migrated (x7)
- ✓ 40% Trademarks (x15), 30% Patents (x6), 20% D&M (x9)
10% Caselaw (x6)

▶ Usage

- ✓ Usage survey – 32 licensees – subscription between oct. – dec. 2014
- ✓ Motivations : free of charge – no delay – official data – quality – update frequency
- ✓ Users : experimented in data – prepared
- ✓ 1/3 start ups - 1/4 foreign companies
- ✓ Feedback on trademarks and patents mainly

4- INPI : Open data

Innovation and added value

▶ Results

- ✓ 30% new services already launched
- ✓ 40% still as projects (not launched yet – need financial resources)
- ✓ 20% not started - 10% cancelled

▶ Added value

- ✓ Opportunity to show skills in new technologies : big data, semantical analysis, linguistic tools, images indexing, data-visualization, infographic design, data aggregation (IP-Company data)
- ✓ Opportunity to capitalize on business expertise : Intellectual property but also marketing, communication, sales and business development, customer relationship, company information.... even human resources

=> INNOVATION

4- INPI : Open data

Various usages

- ▶ IP + Company information (35%)
 - ✓ Approaches : marketing, business development & business relationship, CRM, competitive intelligence
 - ✓ Agregation between IP (trademarks), Company information (ex. RNCS), websites, social networks etc
 - ✓ « All informations that you must know about companies on one place », R&D links between companies, etc

- ▶ Trademarks & Logos – Checking, creation and design (25%)
 - ✓ Approaches : IP, marketing and communication
 - ✓ Semantic analysis, linguistic added value
 - ✓ Trends, consulting, design, administration of trademarks portfolio

4- INPI : Open data

Various usages

- ▶ IP information providers (25%)
 - ✓ Approaches : IP portfolio administration, strategy, competitiv intelligence
 - ✓ Databases gathering data from various IP offices
 - ✓ Research and alerts, web-services

- ▶ Surveys, statistics (10%)
 - ✓ Approaches : trends on IP sector

- ▶ Databases for internal usage only (5%)
 - ✓ Approaches : customer relationship, business development, CRM

Thank you for your attention



Contact

Sabine Darrigade
+33 1 56 65 83 43
sdarrigade@inpi.fr

Anne Poux
+33 1 56 65 83 62
apoux@inpi.fr