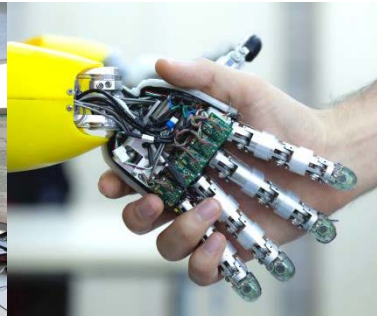


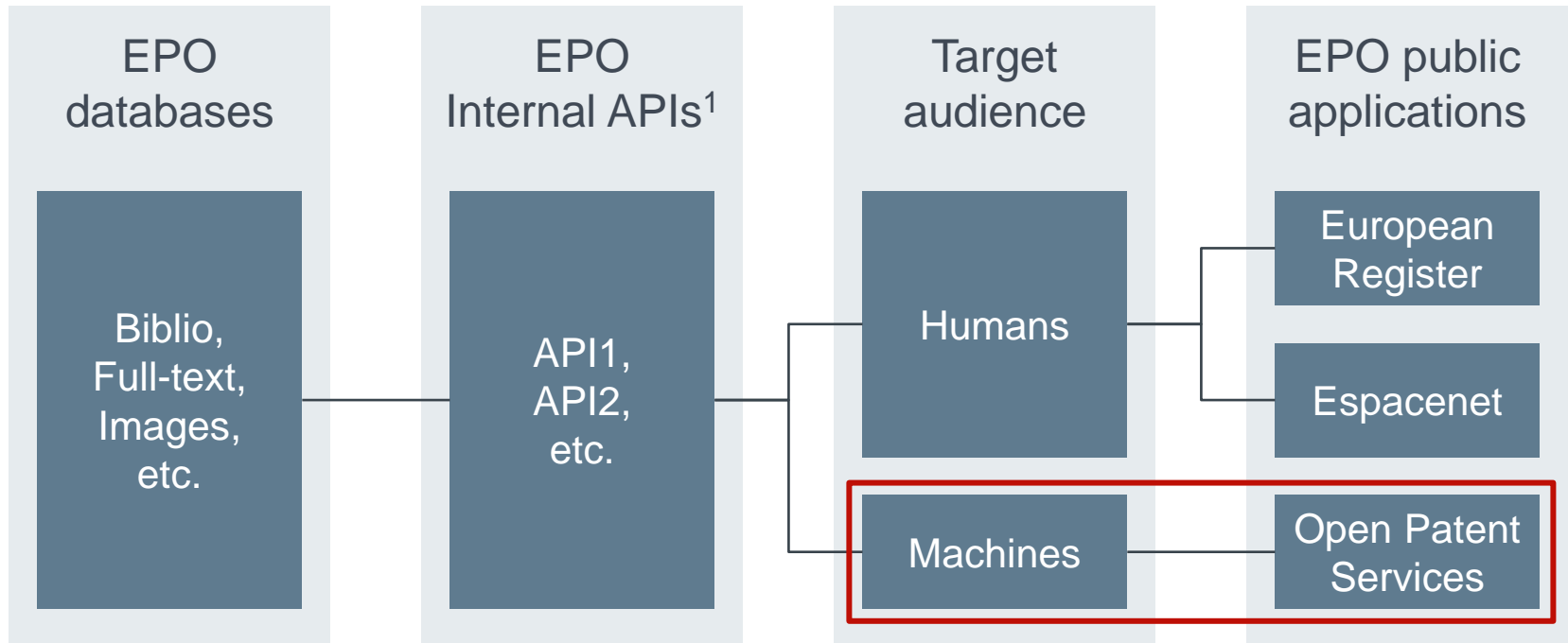


Europäisches
Patentamt
European
Patent Office
Office européen
des brevets

News on Open Patent Services



Open Patent Services (OPS)



¹ API = Application Programming Interface

Overview

- Where are we now?
- What next?
- Revised pricing / Terms and Conditions
- Usage 2017

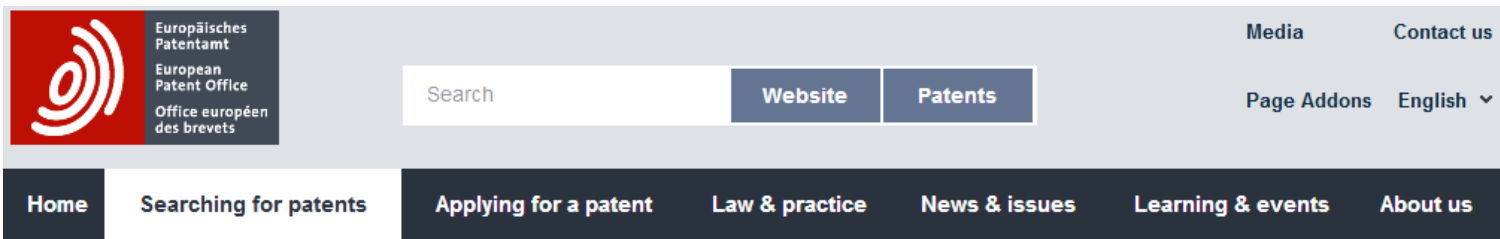
OPS: current situation

- Ver. 3.1 (“end-of-life”) final decommissioning Q2/2018
- Ver. 3.2:
 - Coded full-text national FR publications
 - Register service improvements
 - Facsimile service: migration to new back-end
 - PNG format available in addition
 - compulsory registration
 - testing available only after registration

OPS: what next?

- Coded full-text (description, claims):
 - new collections expected soon via OPS: BE, CY, HR, IE, LU, MC, MD, NO, PL, PT, RO → *Q2/2018*
- Legal status: from L-Tags to XML
 - Family/Legal service: align response to the new INPADOC legal status XML → *timing not known yet*
- CPC INTL: biblio response will change due to population of originating authority (see DOCDB XML) → *April 2019*

New “Data” section on web site



The screenshot shows the top navigation area of the EPO website. On the left is the EPO logo with text in German, English, and French. In the center is a search bar and two buttons labeled 'Website' and 'Patents'. On the right are links for 'Media', 'Contact us', 'Page Addons', and a language dropdown set to 'English'. Below this is a dark navigation bar with white text links: 'Home', 'Searching for patents', 'Applying for a patent', 'Law & practice', 'News & issues', 'Learning & events', and 'About us'.

Home > Searching for patents > Data



Linked open EP data

Bulk data sets

Web services

Coverage, codes and statistics

Data

 Print  Share

If you do not wish to use one of our searchable databases or tools, EPO patent information data is available as linked open data, raw data or via raw data web services for companies wishing to obtain EPO data directly.

Linked open EP data

Linked open EP data creates a public web of interlinked patent data from EPO and other data publishers that can be queried, retrieved and viewed using

Web services: OPS and Publication Server REST

Europäisches Patentamt
European Patent Office
Office européen des brevets

Media Contact us
Page Addons English ▾

Home Searching for patents Applying for a patent Law & practice News & issues Learning & events About us

Home > Searching for patents > Data > Web services

Linked open EP data
Bulk data sets
Web services
European Publication Server
Coverage, codes and statistics

Web services

Print Share

The EPO web services are designed for automated queries, such as automated data retrieval (by robots) or access via third-party portals (e.g. software packages) etc. They offer similar sets of data as the European Publication Server, European Patent Register and Espacenet.

Open Patent Services

Open Patent Services (OPS) is a web service which provides access to the EPO's raw data via a standardised XML interface. It does this using RESTful architecture.

> Find out more about Open Patent Services

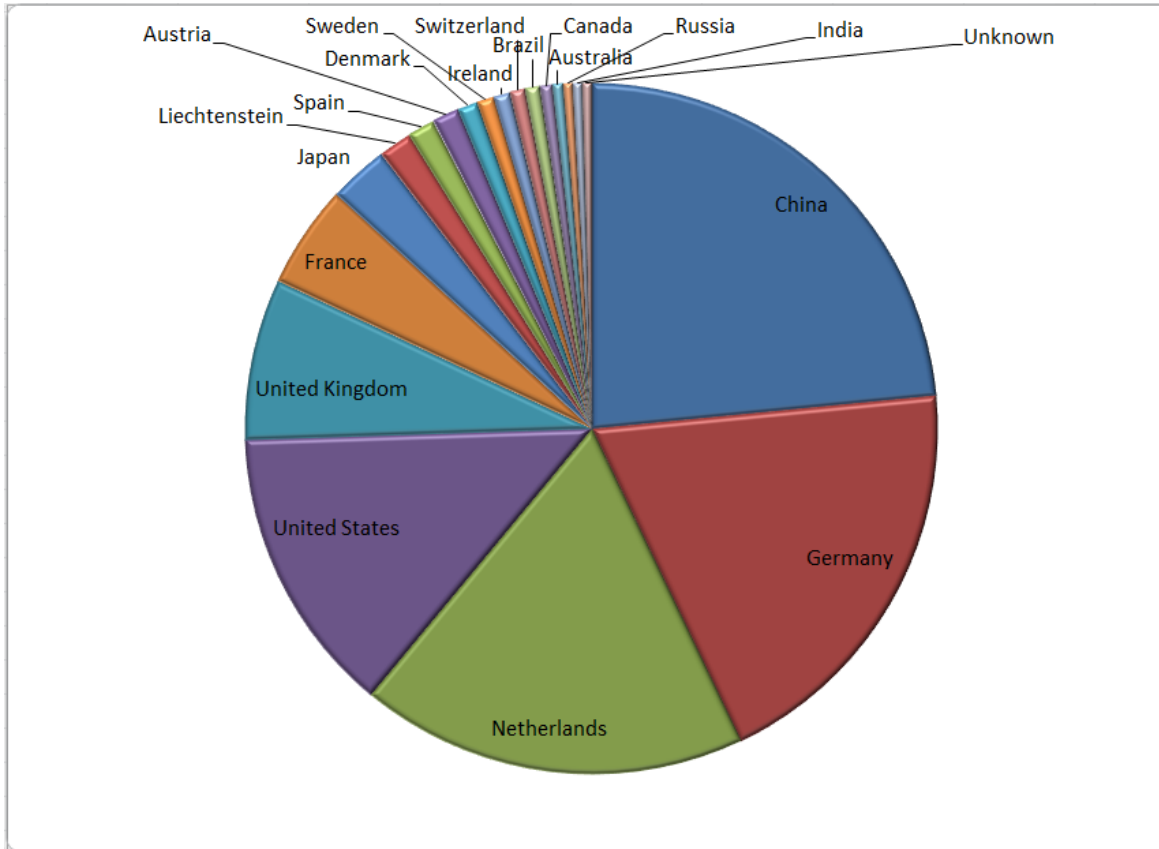
Register Log in > Developers' testing area

OPS Pricing/Terms & Conditions

Since January 2018:

- Free of charge threshold 4 GB/week
- “Paying” profile to access data beyond 4 GB/week
- Flat rate for “Paying” profile in line with annual raw data subscriptions
- Fair use policy still applies

Usage distribution (volumes, 2017) – Top 20



Thank you!