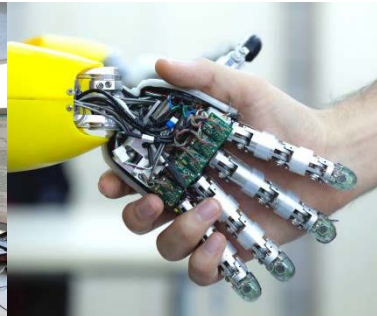




Europäisches
Patentamt
European
Patent Office
Office européen
des brevets

DOCDB/XML – What's new?



DOCDB/XML – What's new

- CPC International
- Unitary Patent in XML
- Other Business



CPC International



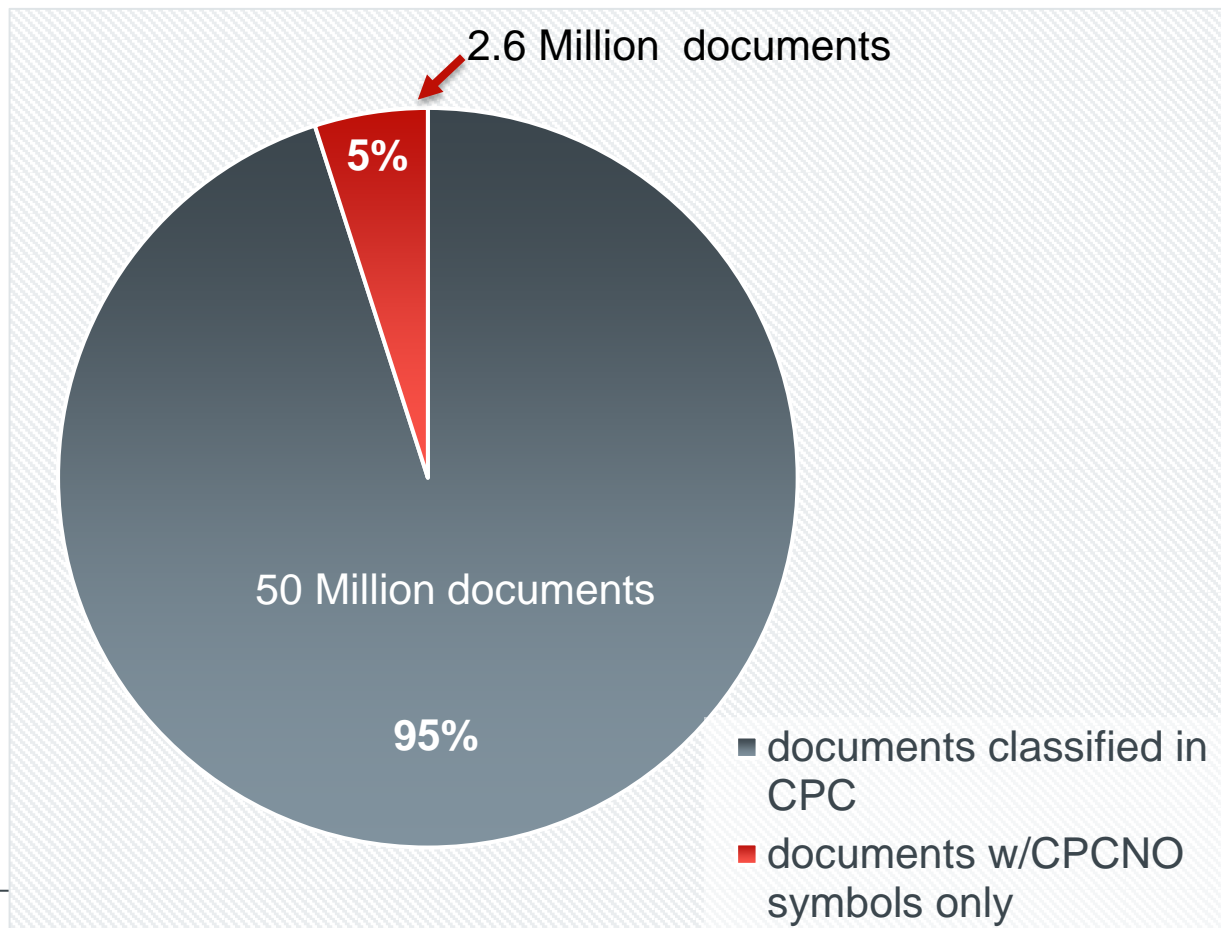
- Migrating CPCNO into CPC
- Representation in XML
- Road-map

Transparent to schema – Impact on content



- Classification-scheme “CPCNO”
 - CPC as allocated by the national office
 - maintained at **publication**-level
 - exchanged at publication-level – **with** generating office
- Classification-scheme “CPC”
 - CPC as allocated by EPO and USPTO
 - maintained at **family**-level
 - inherited by each publication in the family
 - exchanged at publication-level – **without** generating office

- Classification-scheme “CPCNO”
 - classification scheme will be discontinued
 - allocations will be migrated into classification scheme CPC
 - classifications as well as **combination classes**
- Classification-scheme “CPC”
 - CPC as allocated by the national office – including EPO, USPTO
 - maintained at family-level
 - inherited by each publication in the family
 - exchanged at publication-level – **with** generating office



CPC International

Current Picture

CPCNO @ document

CPC @ family

Authority	Publication	Class Allocated
INPI Brazil	BR 9910073	H01R 12/71
SIPO	CN 1306684	H01R 13/65
EPO	EP 1075714	H01R 12/71 H01R 13/6581
UKIPO	GB 2353908	H01R 12/73
KIPO	KR 20010071195	H01R 13/6581
PRV	SE 0003892	H01R 13/6581
USPTO	US 6206729	H01R 12/71 H01R 13/6581

H01R 12/71
H01R 13/6581

CPC International

Future Picture

Authority	Publication	Class Allocated
INPI Brazil	BR 9910073	H01R 12/71
SIPO	CN 1306684	H01R 13/65
EPO	EP 1075714	H01R 12/71 H01R 13/6581
UKIPO	GB 2353908	H01R 12/73
KIPO	KR 20010071195	H01R 13/6581
PRV	SE 0003892	H01R 13/6581
USPTO	US 6206729	H01R 12/71 H01R 13/6581

CPC @ family

H01R 12/71 (EP, US, BR)
H01R 12/73 (GB)
H01R 13/65 (CN)
H01R 13/6581 (EP, US, BR, SE)

CPC Master Database

Symbol	Position	Class Value	Action Date	Generating Office	Class Status	Data Source
H01R 12/71	1	I	20180105	EP	B	H
H01R 12/71	999	A	20180206	US	B	H
H01R 12/71	999	I	20180307	BR	B	H

- More authorities allocating CPC symbols
 - multiple allocations for the **same** symbol
 - one allocation for **each** generating authority
 - this is how the allocations are **stored** in the database
- Manage duplicate symbols within one document
 - option [1] – exchange allocations **full-blown**
 - option [2] – exchange allocations **compressed**

```
<patent-classification sequence="1">
  <classification-scheme office="EP" scheme="CPC"><date>20130101</date></classification-scheme>
  <classification-symbol>H01R 12/71 </classification-symbol>
  <symbol-position>F</symbol-position>
  <classification-value>I</classification-value>
  <classification-status>B</classification-status>
  <classification-data-source>H</classification-data-source>
  <generating-office>EP</generating-office>
  <action-date><date>20180105</date></action-date>
</patent-classification>
```

```
<patent-classification sequence="2">
  <classification-scheme office="EP" scheme="CPC"><date>20130101</date></classification-scheme>
  <classification-symbol>H01R 12/71 </classification-symbol>
  <symbol-position>L</symbol-position>
  <classification-value>A</classification-value>
  <classification-status>B</classification-status>
  <classification-data-source>H</classification-data-source>
  <generating-office>US</generating-office>
  <action-date><date>20180206</date></action-date>
</patent-classification>
```

```
<patent-classification sequence="3">
  <classification-scheme office="EP" scheme="CPC"><date>20130101</date></classification-scheme>
  <classification-symbol>H01R 12/71 </classification-symbol>
  <symbol-position>L</symbol-position>
  <classification-value>I</classification-value>
  <classification-status>B</classification-status>
  <classification-data-source>H</classification-data-source>
  <generating-office>BR</generating-office>
  <action-date><date>20180307</date></action-date>
</patent-classification>
```

Option [1] – Full-Blown - Overhead in XML tags

- 3 family members allocate the same symbol
- 3 family members get triggered for exchange
- 3 family members x 3 allocations = 30 times the same symbol in one delivery

Option [2] – Compressed – Reduced overhead

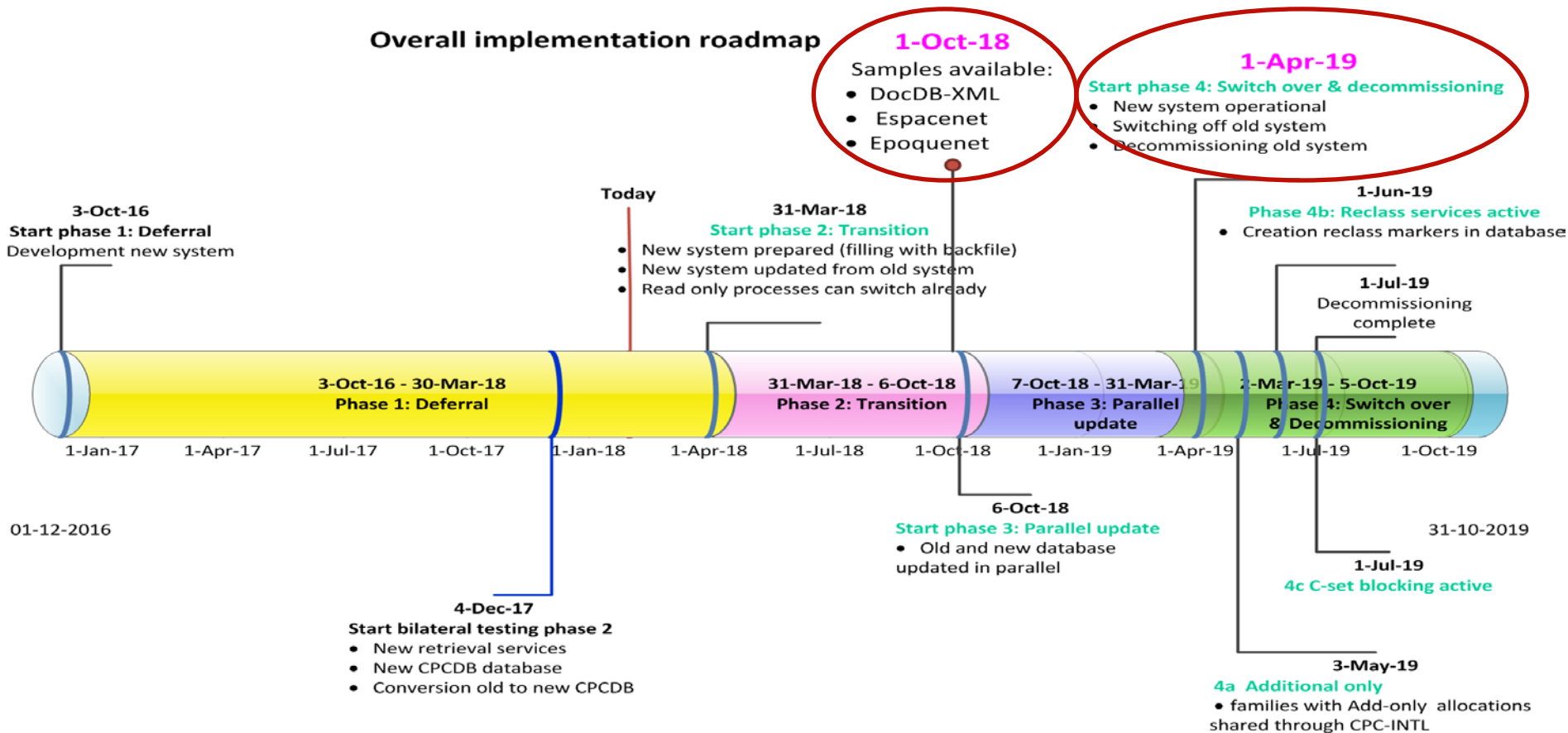
- 30 times the same symbol in one delivery
- reduced by $3 \times 6 = 18$ XML tags

```
<patent-classification sequence="1">
  <classification-scheme office="EP" scheme="CPC">
    <date>20130101</date>
  </classification-scheme>
  <classification-symbol>H01R 12/71 FIBHEP20180105</classification-symbol>
</patent-classification>
<patent-classification sequence="2">
  <classification-scheme office="EP" scheme="CPC">
    <date>20130101</date>
  </classification-scheme>
  <classification-symbol>H01R 12/71 LABHUS20180206</classification-symbol>
</patent-classification>
<patent-classification sequence="3">
  <classification-scheme office="EP" scheme="CPC">
    <date>20130101</date>
  </classification-scheme>
  <classification-symbol>H01R 12/71 LIBHBR20180307</classification-symbol>
</patent-classification>
```

CPC International

Road-map

Overall implementation roadmap



- October 2018 – Sample data
 - for DOCDB/XML
 - for Espacenet
- April 2019 - Front-file
 - new system operational
 - old system switched off
 - first CPC INTL will start coming through
- Aug/Sept 2019 – Back-file
 - CPC INTL throughout the complete collection

Unitary Patent in XML



- Publication EP-C0 identifying “unitary protection”
- Bibliographic data EP-B1 propagated to EP-C0
- Additional element: UP participating states

designation-of-states

Designation PCT,
IFD tags :
country; 081 = designated
country;
country for a regional patent;
Designation EPC,
IFD tags :
contracting-states;
081 =
083 =
extension-states;
Designation other
authorities, e.g. ARIPO, OAPI
081 = contracting
states;
Designation of states
not exchanged in ST.30;

new element

- for **new** EP only
- validation states

new element

- for EP-**C0** only
- participating states

exchange-documents-v2.5.8.xsd

exch:designation-epcType

exch:contracting-states

0..∞

The EPO member States for which protection (depending upon context) is desired

exch:extension-states

0..∞

Recognising EP patent applications and patents on their territory

exch:validation-states

0..∞

Recognising EP patent applications and patents on their territory

exch:up-participating-states

0..∞

EPO member states participating in the Unitary Patent


```
<exch:designation-of-states>
  <exch:designation-epc>
    <exch:contracting-states>
      <country>AT</country>
      <country>BE</country>
      [ ... ]
      <country>SM</country>
      <country>TR</country>
    </exch:contracting-states>
    <exch:up-participating-states>
      <country>NL</country>
    </exch:up-participating-states>
    <exch:validation-states>
      <country>MD</country>
    </exch:validation-states>
  </exch:designation-epc>
</exch:designation-of-states>
```

for **new** EP only

for EP-**C0** only

- Gap Analysis
 - load missing KR-A and KR-U publications
 - corresponding KR-B1 and KR-Y1 already present
 - loading missing documents will result in database conflicts
- Intervention required
 - too many conflicts to manage by on-line correction
 - automated process to simulate on-line correction
 - impact on the “doc-id” at <application-reference>

Other Business

Authority-file Korea

Publication	Application	Doc-ID	Database action	Doc-ID
KR 100387742 B1	KR 20007000095 A	412213982	loaded in application kind-code 'A'	new

Other Business

Authority-file Korea

Publication	Application	Doc-ID	Database action	Doc-ID
KR 100387742 B1	KR 20007000095 A	412213982	loaded in application kind-code 'A'	new
KR 100387742 B1	KR 20007000095 D	412213982	"parked" in application kind-code 'D' application kind-code 'A' is deleted	stable
KR 20010021537 A	KR 20007000095 A	486206536	loaded in application kind-code 'A' application kind-code 'A' is new	new
KR 100387742 B1	KR 20007000095 A	486206536	back into application with kind-code 'A'	stable

amend record for a document that has **not** been subject to a change
only value changed is that of "**doc-id**" @ <application-reference>



Thank you!

patentdata@epo.org